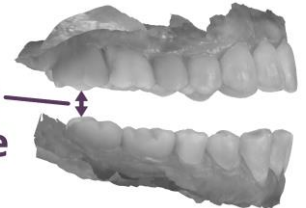


Delivering a Precision Fit

The Slide is a custom-made, precision-fit oral appliance for treating sleep apnea. The comfort and effectiveness of the device is based on a unique Rail and Groove Connector design.

To fabricate this precision device, **a minimum clearance of 5 mm over the posterior teeth is required for connector placement.** This clearance information is provided as part of the patient scan and can be accomplished manually or with the use of a Posterior Bite Fork, designed to assist in achieving the 5 mm spacing requirement.

5mm of posterior clearance



HOW TO USE THE POSTERIOR BITE FORK

The Posterior Bite fork is used when taking the digital scans of the patient's mouth to ensure that the clearance necessary for the Slide fabrication is achieved.

1. **INSERT BITE FORK:** The fork should sit comfortably on the patient's posterior teeth. The pad thickness provides the vertical clearance needed for the precision fabrication of either the Nylon or Acrylic Slide.
2. **ADJUSTMENTS:** Make sure that the midline is straight before proceeding with the taking of a protrusive scan.
3. **REMOVE FORK:** Once the scan has been completed the Posterior Bite Fork can be removed and discarded.



ADDITIONAL RESOURCES

At slide2sleep.com you will find additional information including instructional videos.

Video: Part 1

[Setting up the Posterior Bite Fork](#)



Video: Part 2

[Digitally Scanning the Posterior Bite Fork Registration](#)



Send your requests to info@slide2sleep.com or call 1-855-SLIDE11

theSlide_BFI24355